



**We identify the path**  
of your success





A night scene of a mountain range with a glowing tent in the foreground and the Milky Way in the sky.

”

**If you think you've reached the top,  
find a new mountain.**

Author unknown

# Who we are?

**145**  
specialists

**1994**  
founding

**68 mln**  
income '22

**100%**  
polish capital

**6000**  
clients

Direction: development, investment, employment.





The real power is **the people.**

# We just **know how.**

For 30 years now, we have been supporting the optimization of logistics and production processes.

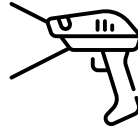


# What can we do for you?



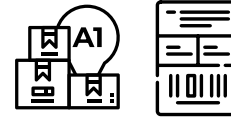
## **IT systems**

logistics, manufacturing, retail



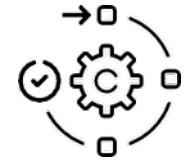
## **Devices**

auto ID



## **Marking, Labels**

product, logistics, warehouse



## **Services**

consulting, service

The premise: a comprehensive and competitive offering

01/

## **IT systems**

for logistics, manufacturing and retail



# 01/ IT systems



## HKK WMS warehouse management system

- Computerisation of warehouse process management.
- Use of barcode technology.
- Optimisation of receipts, storage and shipments.
- Support for e-commerce logistics, handling of returns.
- Easy integration with ERP and courier systems.
- Integration with warehouse automation possible.
- Easier and faster onboarding of new employees.



## Optimisation for the 3PL & Retail sector – Blue Yonder

- BY WMS warehouse management system.
- Category Management – development of accurate planograms.
- Floor Planning – effective management of store floor plans.
- BY Demand – accurate demand forecasting.
- Personnel management system - Labor Management
- TMS transport management system - Transportation Management.
- Billing system for logistics operators.





# 01/ IT systems

## Voice Picking optimisation.

- 30% increase in picking efficiency, 99,99% picking efficiency
- Reduced number of workplace accidents (by up to 20%)
- Shorter onboarding time for new employees (by up to 85%)

## Production management – Digital Twin system

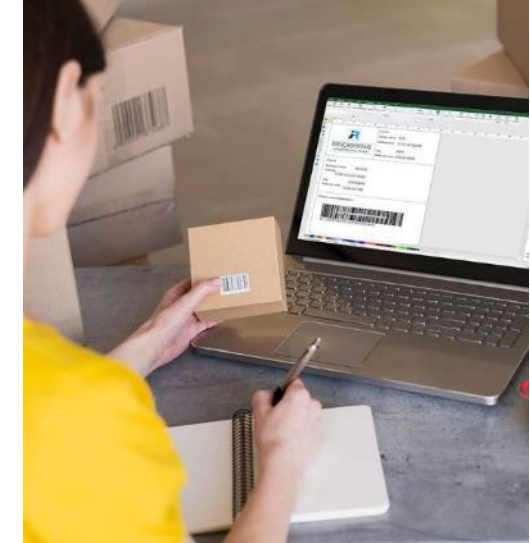
- The system is based on artificial intelligence (AI) algorithms.
- Accurate production schedules and process flow control.
- Cooperation with Poznan University of Technology.

## Mobile devices' fleet management

- Mobile devices' fleet management in a distributed environment.
- Centralisation and automation of software versions' management.
- Increases security, easier administration, continuous efficiency monitoring.

## Design and barcode print management

- Design labels according to industry standards (e.g. GS1, VDA, Odette).
- Mass printing management in environments consisting of many devices
- Miscellaneous label variants (different languages, legal conditions, etc.).

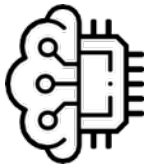


# 02/ **Devices**

auto ID

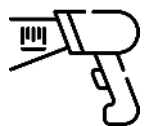


# 02/ Sprzęt



## Automation and robotics for logistics and production

- Barcode and 2D code automatic recognition systems.
- Automation of palletising by robotics.
- Machine vision and vision systems.
- Automation of quality control processes.
- Print & apply labelling robots.
- Process automation based on RFID technology.



## Automatic identification devices

- Mobile and trolley RF terminals, tablets.
- Wearable solutions (terminals, scanners).
- QR, 2D, 1D, Digimarc barcode readers.
- Label printers (mono and colour).
- Band, tag printers.
- Self-adhesive label applicators.
- Flat-panel computers for industry.





# 02/ Devices

## RFID identification

- Reading tags assigned to a particular product or person
- Without the need for physical contact with the identified object.
- Significant acceleration of warehouse and production processes.

## Cubiscan and Cubetape – dimensioning for logistics

- The best way to quickly obtain product data.
- Results automatically exported to the WMS system.
- Optimization of warehouse space and reduction of shipping costs.

## Barcode, DPM and 2D code quality management systems

- Secure, efficient, and stable radio network.
- Essential for the operations of the WMS system infrastructure.
- Audits, measurements, implementation and ongoing service provision.

## Radio networks for warehouse and production

- Efficient and error-free scanning of codes regardless of the hardware used.
- We offer measuring devices for code quality verification.
- Full compliance with ISO norms & GS1 standards.





03/

## **Marking & Labels**

product, logistics, warehouse



# 03/ Marking & Labels



## Self-adhesive labels and tags

- 5 printing machines operating in flexo and digital technology.
- Product, logistics, information labels and many others.
- Application of various refinements possible.
- Matching the selection of raw material and glue to the expected effects.
- Visual quality control at every stage of production.
- Graphic preparation of production.
- Designing systems for automatic application of product labels.



## Stock and production markings

- Professional large format printing house.
- 4 modern printing machines operating in digital technology.
- Markings in accordance with standards and legal regulations.
- Development of a dedicated graphic design possible.
- Production of marketing communication elements.
- Consulting support in the design of signage systems.
- Installation of signs and signage design management.



# 03/ Marking & Labels

## Large format printouts

- Flat signs printout in the 2m x 3m format
- Flexible signs without size limits
- Digital cutting methods - no limits by the shape of the die-cutter.

## Solutions for logistics and e-commerce

- Required use of appropriate labeling and marking.
- Proper labeling of all storage space and machinery.
- Variable content labels for marking returned products, for example.

## Development of wayfinding and space branding systems

- Versatile use: store, office, school, hospital, university, etc.
- Easy orientation in the space thanks to thoughtful design.
- Audit + design + printing + installation. One company = tangible benefits.

## OHS markings

- We produce standard signs compliant with OHS standards
- We offer signs to be used as part of the Kanban or 5S system.
- Your space is safe and meets the necessary standards.





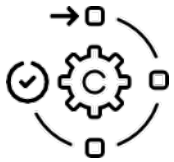
## **Service**

consulting, technical services





# 04/ Services



## Installation, configuration and service of Auto ID devices

- Audit and solution design.
- Proper selection of automatic recognition devices.
- Adaptation to the existing infrastructure at the customer's site.
- Configuration, implementation and optimisation of device operation.
- Remote monitoring of devices and mobile service support.
- Repairs of automatic recognition devices.
- Attractive packages and service plans.



## Advice and consulting on logistics

- Efficient warehouse space design.
- Selection of the optimal functionality of WMS systems.
- Tests of innovative logistic solutions.
- Employee training on automatic recognition technology.
- Consulting on GS1 standards.
- Consulting in the area of production logistics.
- Management of warehouse logistics optimisation projects.



# 04/ Services

## Consulting for the Retail sector

- Category management will help you understand the consumer behaviour.
- Ensure the proper placement of products on shop shelves.
- Increase sales of specific product categories.

## Design and installation of marking systems

- We offer complete marking systems adapted to the specificity of the space.
- We have been implementing this type of projects for several years
- From conceptual, graphic design to optional trial solutions.

## Designing WiFi networks in large facilities

- Secure, efficient and stable radio network.
- Necessary for the operation of IT systems infrastructure.
- We audit, measure, implement and service.

## Support for launching 3PL logistics centres

- Support for launching 3PL logistics centres, project management.
- We develop marking system, provide Auto ID devices.
- We build warehouse automation systems – software and hardware.





# **Solid brands**

This is your guarantee



# Business partners recognised around the world.

We focus on cooperation with the largest and reliable contractors. We are one of the main suppliers of Auto ID equipment and software for logistics in Eastern Europe.

We cooperate, among others, with:



Honeywell

DATALOGIC™



BlueYonder

CUBISCAN™



brother®

TOSHIBA

UROVO®



SATO  
Powered On Site /

FEIG

REA VERIFIER

AXICON





# Hundreds of awards and awards won

It would be hard to count the tokens of appreciation we have received for more than 30 years from our partners. This proves not only the good cooperation between us, but also the strength of the team and the motivation to achieve better and better results.

**We reach for the biggest projects.**





# **30 years of trust**

This is a valuable tip



# Integrity, knowledge, reliability and trustworthiness.

Over 145 co-workers and 6,000 satisfied customers, hundreds of implementations, dozens of business partners.

See where you will find our solutions:





# **New implementations**

WMS / equipment / signs / labels







## 1000 terminals for DOZ.PL

Pharmacy Network and Drug Distributor - Implementation of over 1000 ZEBRA data collector to support distribution using their own courier network



## Several Thousand Devices for DHL

Global logistics operator and courier services company. Implementation of several thousand mobile devices to streamline their courier network, along with dedicated application support and device configuration.



## Hundreds of Tablets for NGK CERAMICS

Japanese manufacturer of automotive components. Implementation of several hundred industrial tablets from Honeywell, elevating their production and logistics processes to a completely new level.





## WMS for Leroy Merlin

Implementation of a Warehouse Management System. Integration of automation and robotics (autonomous robots) in the central warehouse.



## WMS for Ciech

Implementation, integration with corporate systems, configuration of operations using warehouse automation solutions. Planned further development of additional functionalities.

## Raben

### Warehouse System for RABEN

Implementation of a warehouse system for RABEN Group - one of the leaders in the 3PL market in the CEE region, including elements of warehouse automation.





## Warehouse marking for DECORA

Comprehensive marking of the modern Decora S.A. Distribution Center in Kiev. Suspended and painted signs, labeling of high storage shelves, end-of-aisle signs, WMS labels.



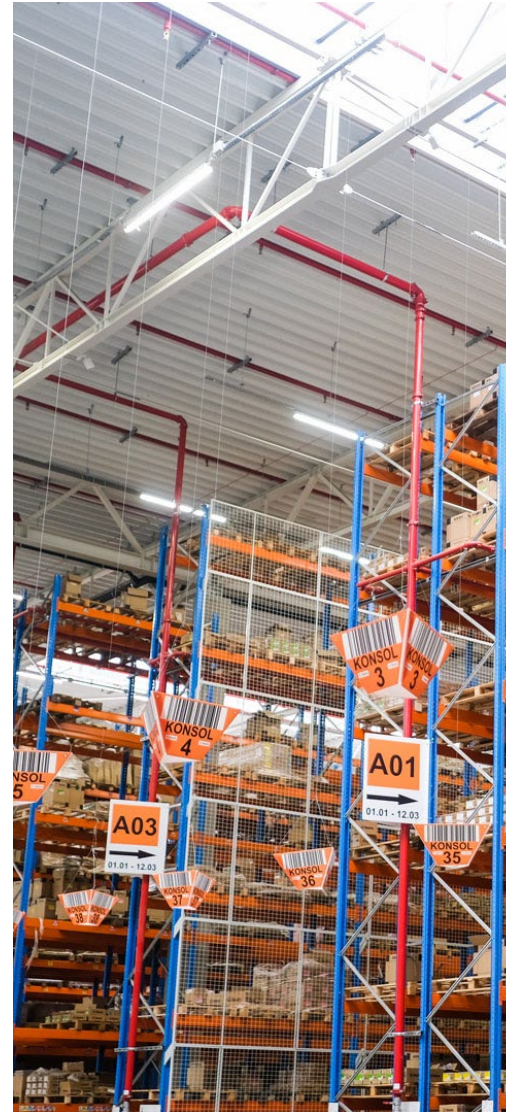
## Marking System at CEVA

Picktower implementation (i.e.) the marking of shelves for order picking (several hundred thousand locations), and labeling of high storage shelves.



## Marking System at Martin Bauer

Comprehensive marking of various spaces such as sliding shelves (mobile reeking), storage areas for the entire Martin Bauer group in multiple company locations. Self-adhesive, suspended, and painted markings.





# **Not just business**

The bigger picture matters







## We organize seminars and training sessions

In collaboration with renowned research institutes, higher education institutions, and business practitioners. These events aim to promote modern tools that streamline contemporary logistics processes.



POZNAN UNIVERSITY OF TECHNOLOGY

## Together with Poznań University of Technology, we are carrying out the research project "Digital Twins."

The project's objective is to develop a new innovative product in the form of a system that enables active production control through dynamic production scheduling and real-time monitoring of material flow and manufacturing processes.

## We sponsor the activities of the Logistics Student Society at Poznań University of Technology.

We recognize a tremendous opportunity and potential in fostering the development of future young specialists in our industry. We take pride in their enthusiasm and the fact that logistics, in its broadest sense, is one of their passions.



# Sustainable development is not just a cliché for us.

**We take the challenges of today's business seriously. We understand priorities. Being aware of the above, we can develop in a sustainable way in dynamically changing conditions.**



## 01/ People

- Zależy nam, aby wszyscy w naszej organizacji czuli się dobrze i zwyczajnie lubili tu pracować.
- Słuchamy głosów naszych koleżanek i kolegów, starając się kształtować naszą codzienną pracę w oparciu o ich zdanie i pomysły.
- 100% naszej załogi jest objęta programami finansowanymi z Funduszu Socjalnego.
- Zapewniamy możliwość rozwoju osobistego dzięki szkoleniom i warsztatom.
- Wdrożyliśmy kodeks zasad etycznych w postępowaniu wewnątrz i na zewnątrz firmy.

## 02/ Environment

- 100 000 kWh zainstalowanej mocy fotowoltaicznej.
- 20% mniej zużytego gazu w wyniku realizacji programów usprawniających ogrzewanie budynków.
- 50% mniej zużytej energii elektrycznej w wyniku realizacji usprawnień w systemach oświetlenia miejsc pracy.
- 5 międzynarodowych certyfikatów ESG: ISO, ECOVADIS, FSC, Elevate, Avetta.
- Certyfikat ISO 9001:2015.

## 03/ Community

- Angażujemy się w sprawy ważne dla ludzi, niezależnie od tego, czy pochodzą z bliższego, czy z dalszego otoczenia.
- Pomagamy tym, którzy tego potrzebują, organizując firmowe zbiórki dla dzieci.
- Współfinansujemy wydarzenia ważne dla życia społeczności lokalnej.
- Wspieramy lokalne kluby sportowe.
- Wierzymy, że dobro wraca!

Identifying **your success.**



**HKK Group**  
HIT-Kody Kreskowe Iglewscy Sp. J.  
ul. Wierzbowa 7, 62-002 Suchy Las  
biuro@hit-kody.com.pl  
+48 61 652 77 50

**hkkgroup.pl/en**

