



We identify the path
of your success



We just **know how.**

For 30 years now, we have been supporting the optimization of logistics and production processes.



HKK Group

One company, so many possibilities!

We work with Customers in almost every industry and every organization size. The optimization needs in these areas of business operations are diverse. In order to meet them, we have adopted the concept of the broadest possible holistic profile for our business.

HKK Group consists of the following departments: IT Systems, Software Development, Auto ID Devices, Signage and Digital Printing, Automation Solutions, Labels and Service. Thanks to this broad structure, we are able to help you in a comprehensive way.

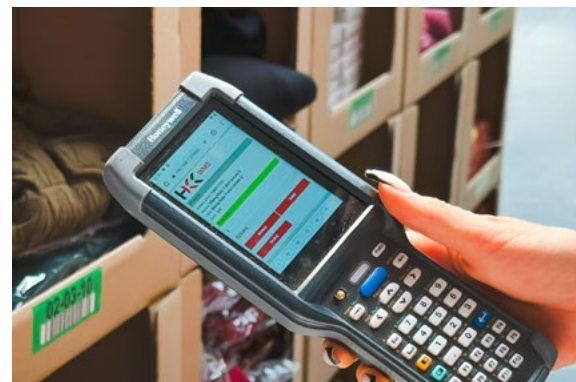
Our team consists of experienced logistics experts. We do not only work in warehouses. We implement optimization projects at POSs, major airports, ports, and third-party storage companies. We are one of the main suppliers of Zebra, Honeywell, Datalogic, CAB, Toshiba, and Cubiscan equipment in Eastern Europe.

IT systems and solutions



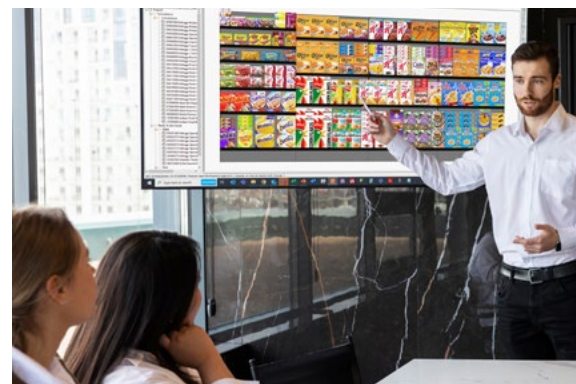
Digit.IO WMS warehouse management system

- Computerisation of warehouse process management.
- Use of barcode technology.
- Optimisation of receipts, storage and shipments.
- Support for e-commerce logistics, handling of returns.
- Easy integration with ERP and courier systems.
- Integration with warehouse automation possible.
- Easier and faster onboarding of new employees.



Optimisation for the 3PL & Retail sector – Blue Yonder

- BY WMS warehouse management system.
- Category Management – development of accurate planograms.
- Floor Planning – effective management of store floor plans.
- BY Demand – accurate demand forecasting.
- Personnel management system - Labor Management
- TMS transport management system - Transportation Management.
- Billing system for logistics operators.



Voice Picking optimisation.

The Voice Automated Solutions voice picking system streamlines the process of picking goods in the retail and e-commerce sector. It enables warehouse operators to communicate with the WMS system using voice commands, increasing the efficiency of picking and, consequently, the operations of the entire warehouse.

Production management – Digit.IO Factory software

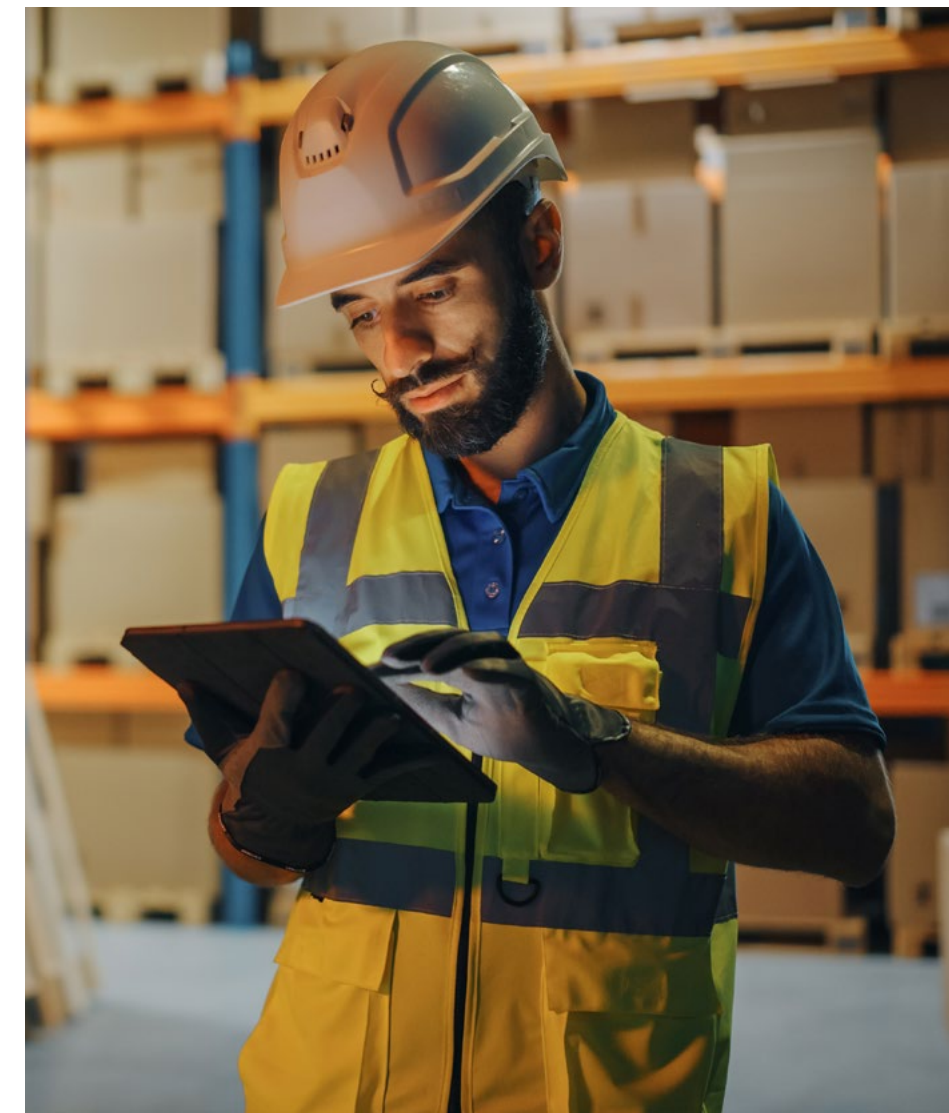
The system is based on Digital Twin & artificial intelligence (AI) algorithms. It allows for creating accurate production schedules depending on the type of production processes. The system communicates with various types of machines on an ongoing basis, while controlling the course of production processes.

Mobile devices' fleet management

The SOTI solutions suite offers extensive possibilities of mobile devices' fleet management in a distributed environment. It enables centralisation and automation of software versions' management, increases user security, facilitates administration and allows for constant monitoring of efficiency.

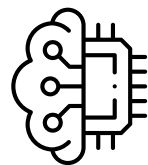
Design and barcode print management

The Teklynx solutions suite is intended to design labels according to industry standards (e.g. GSI). It also enables mass printing management in environments consisting of many devices (especially self-adhesive label printers) and miscellaneous label variants (different language versions, legal conditions, etc.).



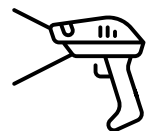
02/

Auto ID devices



Automation and robotics for logistics and production

- Barcode and 2D code automatic recognition systems.
- Automation of palletising by robotics.
- Machine vision and vision systems.
- Automation of quality control processes.
- Print & apply labelling robots.
- Process automation based on RFID technology.



Automatic identification devices

- Mobile and trolley RF terminals, tablets.
- Wearable solutions (terminals, scanners).
- QR, 2D, 1D, Digimarc barcode readers.
- Label printers (mono and colour).
- Band, tag printers.
- Self-adhesive label applicators.
- Flat-panel computers for industry.



RFID identification

Contactless reading systems based on RFID technology. We offer systems operating in passive (HF and UHF) and active technology. RFID systems accelerate the processes of stocktaking, receipt and release of goods, or management of the organisation's fixed assets.

Cubiscan and Cubetape – dimensioning for logistics

It is intended to optimise the use of warehouse space, as well as to reduce the cost of courier shipments. It is based on automatic solutions (dimensioners installed on internal transport lines), semi-automatic devices (Cubiscan), as well as electronic measures that export measurement results to the WMS system (Cubetape).

Barcode and 2D code quality management systems

Measuring instruments enabling verification of the quality of barcodes and 2D codes in accordance with GSI standards. Such solutions are used in many industries, especially in the retail industry due to the need to ensure faultless readability of barcodes in the sales process.

Radio networks for warehouse and production

Secure and stable radio networks are one of the key elements of modern logistics. Data transfer between systems or between systems and operators must take place in real time. This is only possible thanks to the use of modern WiFi network infrastructure.



Marking and Labels



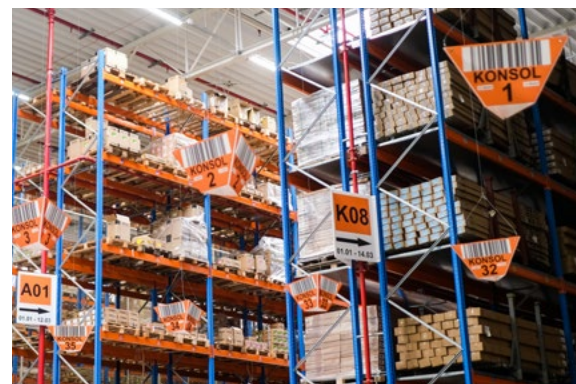
Self-adhesive labels and tags

- 5 printing machines operating in flexo and digital technology.
- Product, logistics, information labels and many others.
- Application of various refinements possible.
- Matching the selection of raw material and glue to the expected effects.
- Visual quality control at every stage of production.
- Graphic preparation of production.
- Designing systems for automatic application of product labels.



Stock and production markings

- Professional large format printing house.
- 4 modern printing machines operating in digital technology.
- Markings in accordance with standards and legal regulations.
- Development of a dedicated graphic design possible.
- Production of marketing communication elements.
- Consulting support in the design of signage systems.
- Installation of signs and signage design management.



Large format printouts

Our production capabilities allow us to produce any large-format printout in the 2m x 3m format (flat signs) and without size limits (flexible signs). Due to the use of digital cutting methods, the shapes of our signs are not limited by the shape of the die.

Solutions for logistics and e-commerce

Logistics in the e-commerce business requires the use of appropriate signs and labels. Starting from the proper marking of the warehouse space, through accurate marking of logistics equipment, to labels with variable, personalised content for marking, for example, returned products.

Development of wayfinding and space branding systems

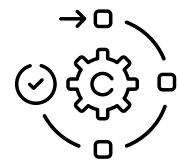
A shop, office or public facility should be marked in an interesting way, which would attract the attention of visitors, but also in a way that ensures easy orientation in space. Information signs for the visually impaired can also be an important element of public space markings.

OHS markings

We produce standard signs compliant with occupational health and safety standards and signs to be used as part of the Kanban or 5S system. The implementation of this type of marking will ensure a safe space meeting the necessary standards in this regard.



04 / Services and consulting



Installation, configuration and service of Auto ID devices

- Audit and solution design.
- Proper selection of automatic recognition devices.
- Adaptation to the existing infrastructure at the customer's site.
- Configuration, implementation and optimisation of device operation.
- Remote monitoring of devices and mobile service support.
- Repairs of automatic recognition devices.
- Attractive packages and service plans.



Advice and consulting on logistics

- Efficient warehouse space design.
- Selection of the optimal functionality of WMS systems.
- Tests of innovative logistic solutions.
- Employee training on automatic recognition technology.
- Consulting on GSI standards.
- Consulting in the area of production logistics.
- Management of warehouse logistics optimisation projects.



Consulting for the Retail sector

Consulting in the area of category management will help you understand the consumer behaviour of customers, ensure the proper placement of products on shop shelves and increase sales of specific product categories. The consulting service can be part of the implementation of the Blue Yonder system, but it is also offered as a standalone service.

Design and installation of marking systems

We offer complete marking systems adapted to the specificity of the space and users. We have been implementing this type of projects for several years, offering a whole range of possibilities: from conceptual and graphic design to optional trial solutions.

Designing WiFi networks in large facilities

Modern IT systems in the field of logistics and production logistics require uninterrupted access to a wireless network. Data exchange between the system and users takes place in the real-time mode. Our consultants deal with auditing, design and configuration of WiFi networks in warehouse and industrial facilities.

Support for launching 3PL logistics centres

Our support involves the project management process, construction of warehouse automation components, marking high storage racks, arrangement of office space and many other elements necessary for productive start of a distribution centre.

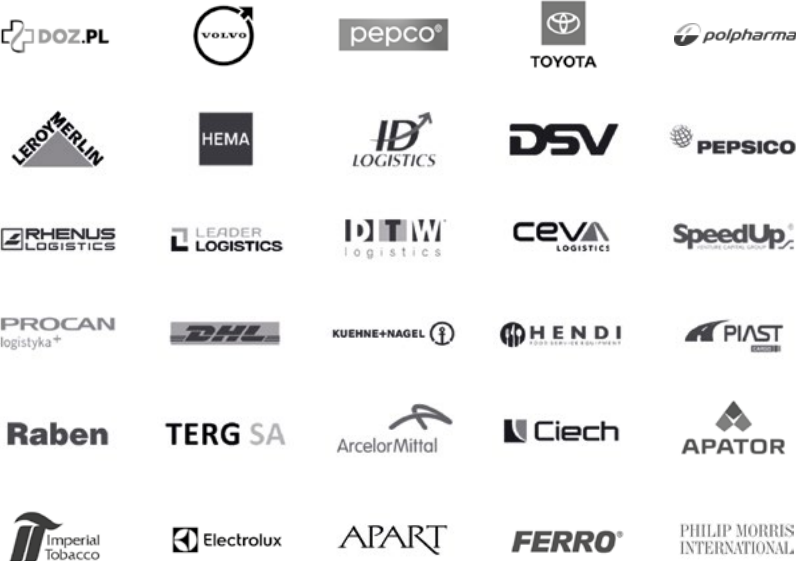




Integrity, knowledge, reliability and trustworthiness.

Over 145 co-workers and 6,000 satisfied customers, hundreds of implementations, dozens of business partners.

See where you will find our solutions:



Selected recommendations

Implementation of the WMS system – Leroy Merlin Polska

“The decision to implement omnichannel JDA Warehouse Management solutions was made. It supported the operations of the main distribution centre for the network of 62 large-format stores in Poland and the Leroy Merlin sales network in Ukraine and Romania.

The project covered 3 basic phases corresponding to Leroy Merlin’s main distribution channels: e-commerce, cross-docking (i.e. reloading and sending goods to the recipient directly after delivering them to the warehouse, without the need for its storage) and stock (warehousing).

The result of the implementation are 24 storage strategies, 4 strategies for automatic allocation of goods to orders, 33 independent mechanisms for creating picking lists, several strategies for auto replenishment of picking areas and several inventory counting strategies. The use of JDA WMS made it possible to overcome the most significant omnichannel barrier, i.e. the automation of goods flow processes in the warehouse and the increasing stream of returns. From this point there is a straight way to “me-commerce” – full integration of channels and the offer of modern services that focus on the customer.”

Product label printouts – One Day More

“We have been cooperating with the HKK Group printing house (HIT-Kody Kreskowe) since the beginning of 2017 and we have completed many successful projects together. We appreciate good print quality, which is so important for our labels, and attractive price ranges. The flexibility and speed of implementation have to be recognised as well.”

Wojciech Młodawski, Purchasing Director

Delivery of Auto ID equipment – IKANO Industry

“I highly recommend HKK Group (HIT-Kody Kreskowe) as a business partner. They are reliable, professional and always provide high quality work. Their know-how, attention to detail and awareness of our needs have been invaluable to our collaboration and I have no doubt they will be a valuable asset to any team.”

Mikołaj Szaroleta, IT Administrator

Thank you for your trust.

Sustainable development is not just a cliché for us.

We take the challenges of today's business seriously. We understand priorities. Being aware of the above, we can develop in a sustainable way in dynamically changing conditions.



01/ People

For over 30 years, we have been constantly making sure that everyone in our organisation feels good. We listen to the voices of our colleagues, trying to shape our daily work based on their opinions and ideas. Our HR policy is based on several particularly important areas: occupational health and safety, personal development, management by objectives, ethical principles in conduct both inside and outside the organisation. Our team is our strength!

02/ Environment

We started activities aimed at emission reduction in 2019. So far, we have managed to retrofit lighting, heating and production systems. Thanks to investments in photovoltaic systems, over 40% of the energy we are consuming comes from renewable sources. However, we do not stop at this point and plan to constantly increase this potential. We feel that we have an impact on the environment. We want it to be the best possible.

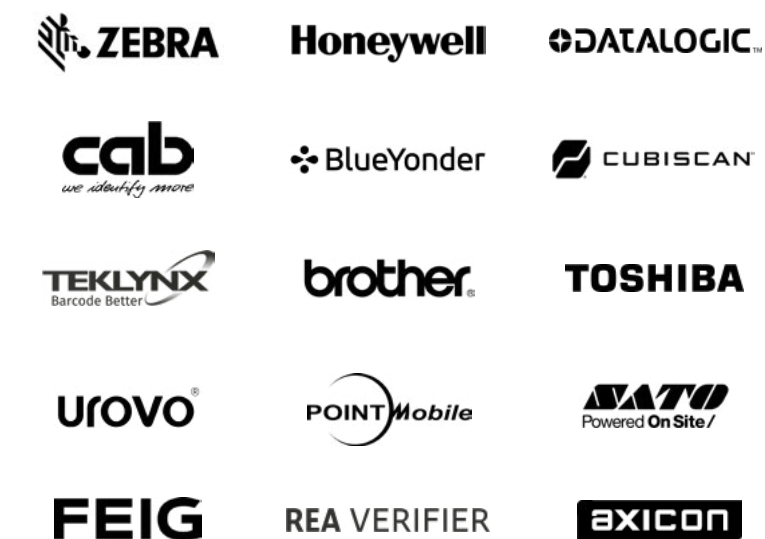
03/ Community

We engage in matters important to people, regardless of whether they come from a closer or further environment. We help people in need by organising collections for toys for children, co-financing events important for the life of the commune, or supporting local sports clubs. Although we operate throughout Europe, we do not forget about the local community. We believe in the principle that good comes back.

Business partners recognised around the world.

We focus on cooperation with the largest and reliable contractors. We are one of the main suppliers of Auto ID equipment and software for logistics in Eastern Europe.

We cooperate, among others, with:





Identifying **your success.**



HKK Group

HIT-Kody Kreskowe Iglewscy Sp. J.
ul. Wierzbowa 7, 62-002 Suchy Las
biuro@hit-kody.com.pl
+48 61 652 77 50

hkkgroup.pl/en

